

KLONER3D® KIDS

EDUCATIONAL SERIES 3D PRINTER



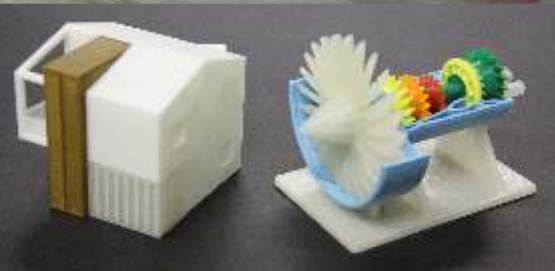
KIDS



KIDSXL

- NO MECHANICAL CALIBRATION
- NO MAINTENANCE BY THE USER
- READY FOR USE
- PRINT ENVIRONMENT ENCLOSED WITH WORK AREA AT TEMPERATURE CONTROLLED
- LOADING MATERIAL WITHOUT ACCESS TO PRINT AREA
- SAFETY INTERLOCK ON THE DOOR
- TOUCH SCREEN
- EQUIPPED WITH USB PORT, SD CARD READER AND WI-FI (OPTIONAL)
- IDEAL FOR SCHOOLS!!!

KLONER3D® KIDS - KIDSXL



EXTERNAL DIMENSIONS (WxDxH)

WEIGHT 12Kg - 15Kg

FILAMENT DIAMETER 120x120x120mm (1.70 lt) - 1.50x140x340mm (7, 10 lt)

NOZZLE DIAMETER 0.5mm

MIN. LAYER HEIGHT 0.1mm

CLOSED PRINTING ENVIRONMENT YES

PRINTER BED ADJUSTMENT YES

MOVEMENT RESOLUTION 0.01mm

POSITIONING RESOLUTION 0.01mm

MECHANICAL ADJUSTMENT, MAINTENANCE, LUBRICATION ETC. YES

PRINTABLE MATERIALS NO

OPERATING SYSTEM OF THE CUSTOMER MULTIMATERIAL

INPUT FILE FORMATS STL, OBJ, GCODE

ACCESSORIES Windows, Mac and Linux

OPERATING REQUIREMENTS interlock, touch screen, SD card reader, wi-fi (optional)

CASE COLOR electrical: 100-240 Vac 50-60 Hz - ~100W / 140W

operation: temperature: 15°C-35°C; humidity: 15%-55%

interlock, touch screen, SD card reader, wi-fi (optional)

electrical: 100-240 Vac 50-60 Hz - ~100W / 140W

operation: temperature: 15°C-35°C; humidity: 15%-55%

interlock, touch screen, SD card reader, wi-fi (optional)

electrical: 100-240 Vac 50-60 Hz - ~100W / 140W

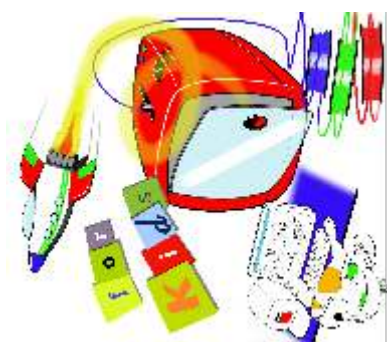
operation: temperature: 15°C-35°C; humidity: 15%-55%



SAFETY LOCK
while printing



NO
maintenance



Follow us:



www.kloner3d.com

Commercial Office
KLONER3D® clevertex s.n.c.

Via Lorenzo di Credi, 20
50136 Firenze - Italy
T. +39 (055) 664396
F. +39 (055) 3980810

Manufacturing Company
KLONER3D® officine verdelli s.r.l.

Via Campofiore, 100
50136 Firenze - Italy
T. +39 (055) 660592
F. +39 (055) 6241316

Commercial References
KLONER3D® clevertex s.n.c.

T. +39 (055) 664396
M. +39 (339) 2572762
sales@kloner3d.com
info@kloner3d.com